



## FEATURES

- CE, Lead-free & RoHS2 compliant.
- ISO/IEC 11801, CENELEC EN 50173-1 and IEC 60603-7
- IEC 60603-7-2 and IEC 60603-7-4
- Compatible for T568A and T568B wiring schemes

## ELECTRICAL

Current Rating	1.5 Amp
Insulation Resistance	500 Megohm min.
Contact Resistance	20 Milli-ohm max
Dielectric Strength	1000 VAC (RMS)
Voltage	30 VAC max.

## MECHANICAL

Insertion Life	750 mating cycles
Pull Force	20 lbs (89N)

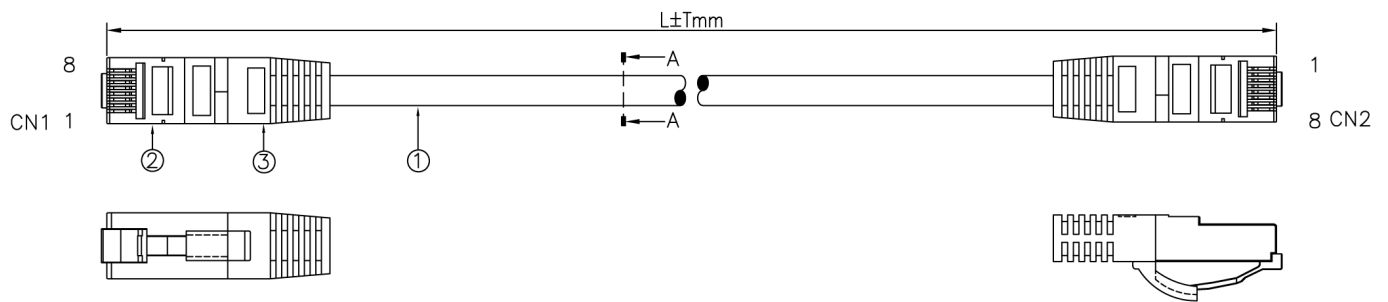
## ENVIRONMENTAL

Temperature	-10°C ~ 60°C
Humidity	10% ~ 90%RH

## MATERIAL

Cable	26AWG (7/0.16 ± 0.008cu) *4 PAIR + Filler + Mylar + Drain Wire + AL-Foil + PVC/LSZH Jacket
Connector	RJ45 (8P8C) Male type with shield
Insulation	Clear polyester, UL94V-2
Contacts	Brass, Gold plated G/F
Shield	Copper, Nickel plated
PVC molding	PVC

# CATEGORY 6 SHIELDED PATCH CABLE



## PART NUMBER

65261

Category 6 Shielded Patch Cable